

## Minor Eye Conditions (MECs)

### Temporary expansion of pilot - COVID-19 response

#### Information for GPs

To assist with the current pressures in GP Practices and Hospitals, the CCG is temporarily expanding the Minor Eye Conditions (MECS) Pilot Service to enable GP Practices to signpost patients at the point of triage to a number of Opticians in the area that will be able to triage them via telephone / video call.

Further details including a Pathway can be found below. It still allows for GPs to refer directly to Secondary Care for patients who need it, but we hope by offering the triage service it will alleviate pressure on your service.

If this service is successful, after an initial 1-2 week period, we hope to be able to roll it out across Derby and Derbyshire as a temporary pathway change in response to COVID-19. We have also received guidance from NHS England this week that will require “red” and “green” sites (hot/cold) for optometrist practices to see patients presenting with urgent eye conditions. This triage forms part of processes already in place and fulfils requirements for green/cold sites that the CCG are required to provide. Work on the red/hot sites will begin upon receipt of guidance from NHSE/I.

#### Which patients can GP practices re-direct via the triage?

The inclusion criteria for the MECs service are as follows:

- Sudden onset loss of vision including transient loss
- Ocular pain
- Differential diagnosis of red eye
- Foreign body and emergency contact lens removal
- Dry eye
- Blepharitis
- Epiphora
- Trichiasis
- Differential diagnosis of lumps and bumps in the vicinity of the eye
- Flashes/floaters
- Patient reported sudden onset field defects

#### **PLEASE NOTE: THIS SERVICE IS NOT FOR PATIENTS WITH RED FLAG SYMPTOMS.**

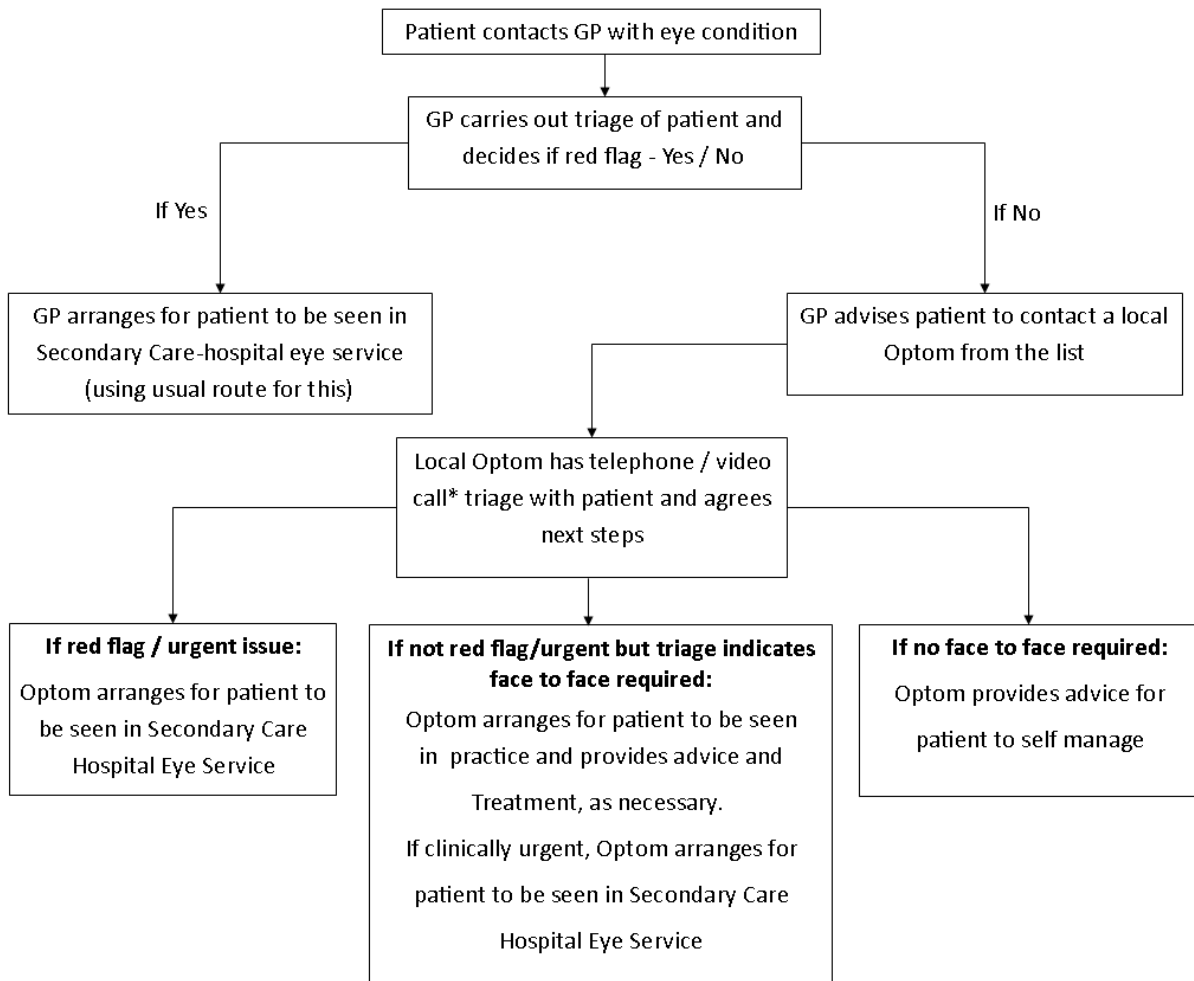
Patients with red flag symptoms should be onward referred to secondary care as is currently the case.

There is a separate information sheet available to support patients, which includes the choice of service identified in the information below. Patients will be asked to contact the service themselves directly for triage via telephone / video call and for further advice.





Minor Eye Conditions Optometry Service (COVID-19 INTERIM PATHWAY)



\*Video calling has been available for some time in Optometric practices and may be utilised for the primary care element of this service.